



## THE IDEAL VENUE FOR ALL KINDS / VERSATILE EVENT HUB IN THE HEART OF WAN CHAI

### 宴會及活動之理想場地 / 靈活多變 位處灣仔核心的活動空間

Located in the heart of Wan Chai, the brand new Hopewell Hotel puts you in the centre of it all.

Whether you are planning an intimate family gathering or a major conference, our column-free and flexible event spaces offer you a wide choice of size, configuration and views of the Victoria Harbour, the hills and the bustling Wan Chai district.

Our dedicated event specialists will assist you to make your vision a reality, complete with custom menus by our talented culinary team.

合和酒店座落灣仔的核心位置，讓您切身感受香港的活力。

無論您要籌備小型家庭聚會還是大型會議，我們光線充裕及無柱式的活動空間為您提供不同大小、間格及景觀 (如維多利亞港、山景以及灣仔區的繁華城景) 的場地選擇。

我們專業的活動策劃團隊能協助您把願景化為真實。而擁有豐富經驗及不斷創新的餐飲團隊為您獻上的特製菜單，定能為您的整個活動錦上添花。



# 1,000 Guestrooms

Wide range of room types to best suit your needs  
多種房型可靈活配合您的需求



# +6,500m<sup>2</sup>

Function space, all column-free  
多功能空間, 全部無柱式設計



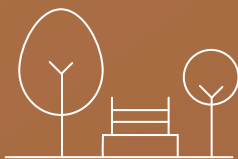
# +30,000m<sup>2</sup>

Shopping mall with wide varieties of shops  
and restaurants under the same complex  
建築大樓合共提供購物中心  
擁有各種各樣的商店和餐飲設施



# +400

Parking space and valet parking service with  
designated guest drop-off and pick-up areas  
車位和代客泊車服務，設有特定的賓客上落區



# +6,000m<sup>2</sup>

Greenery park next to hotel  
酒店旁特設綠化公園



# Designated MTR Exit

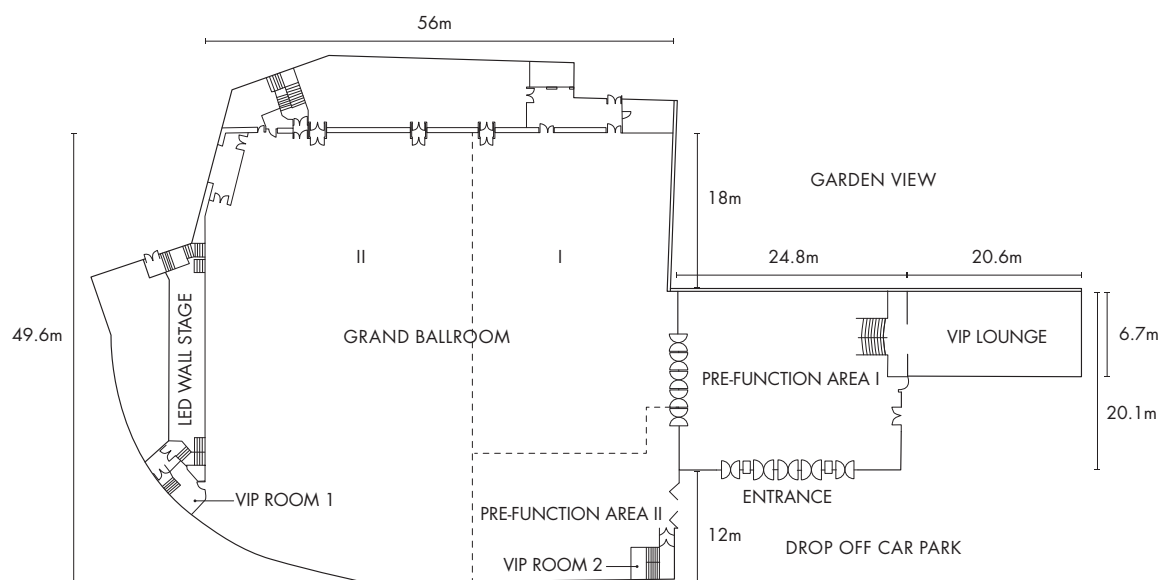
Wan Chai MTR Station  
指定港鐵出口, 灣仔港鐵站

# GRAND BALLROOM

## 合和大禮堂 - L16

- Can accommodate 1,800 guests for large-scale event and conference
- Column-free function space with 8-metre high ceiling
- Spacious and versatile, can be divided into 2 halls for all kinds of events
- Allows direct car and truck drive-in
- Built-in stage and LED wall
- Spacious Pre-function area and VIP Lounge (with exclusive restroom facilities)

- 可容納1,800位賓客的大型活動和會議
- 樓底高達8米的無柱式活動空間
- 明亮寬敞、多功能的場地可分為兩個中型禮堂，適合舉辦不同規模的活動
- 房車及貨車可直接駛進場地
- 內置大型舞台及 LED 幕牆
- 寬敞活動前廳及貴賓接待區 (特設貴賓梳洗間)

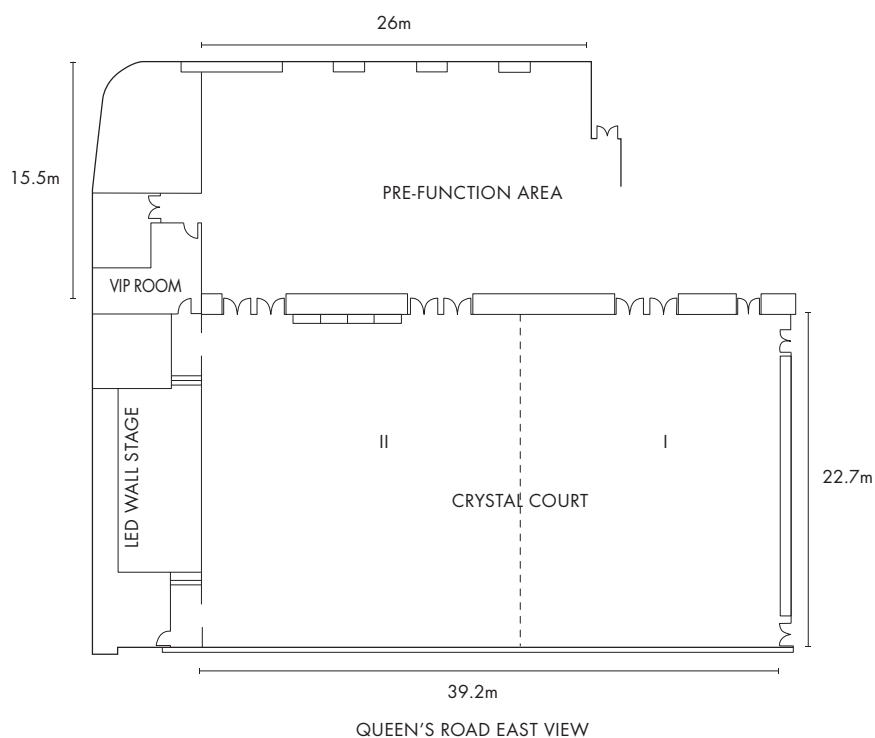


Venue	Ceiling Height (m)	Floor Area		Dimensions (m)	Theatre (person)	Banquet	
		(sq.m.)	(sq.ft.)			(person)	(table)
Grand Ballroom (I + II + Prefunction Area II)	8	2,678	28,815	56 x 49.6	1,800	1,584	132
Pre-function Area I	4.6	484	5,358	24.8 x 20.1	-	-	-
Pre-function Area II	8	294	3,450	22.5 x 13.4	-	-	-
Grand Ballroom I	8	778	8,708	36.4 x 22.5	500	408	34
Grand Ballroom II	8	1,606	17,951	49.8 x 33.5	1,300	852	71
VIP Lounge	3.8	138	1,485	20.6 x 6.7	-	-	-

# CRYSTAL COURT

## 水晶殿 - L19

- Can accommodate 750 guests for major events and conferences
  - Column-free function space with expansive pre-function area
  - Unique decoration with huge glass windows, allowing the venue to receive soft and natural light
  - Spacious and versatile, can be divided into 2 halls for different scales of events
  - Equipped with French crystal chandeliers, built-in stage and LED wall
- 可容納 750 位賓客的活動和會議
  - 無柱式的活動空間提供廣闊的活動前廳
  - 偌大的玻璃窗設計，採光度十足，讓場地盡收柔和的天然光
  - 明亮寬敞、靈活的場地可分為兩個中型禮堂，適合舉辦不同大小的活動
  - 特設晶瑩閃爍的法式水晶吊燈，內置舞台及 LED 幕牆



Venue	Ceiling Height (m)	Floor Area		Dimensions (m)	Theatre (person)	Banquet	
		(sq.m.)	(sq.ft.)			(person)	(table)
Crystal Court	6.4	1,003	10,792	39.2 x 22.7	750	696	58
Crystal Court I	6.4	341	3,669	16.8 x 20.3	300	240	20
Crystal Court II	6.4	575	6,187	22.4 x 22.7	450	408	34
Pre-function Area	3.7	547	5,886	26 x 15.5	-	-	-

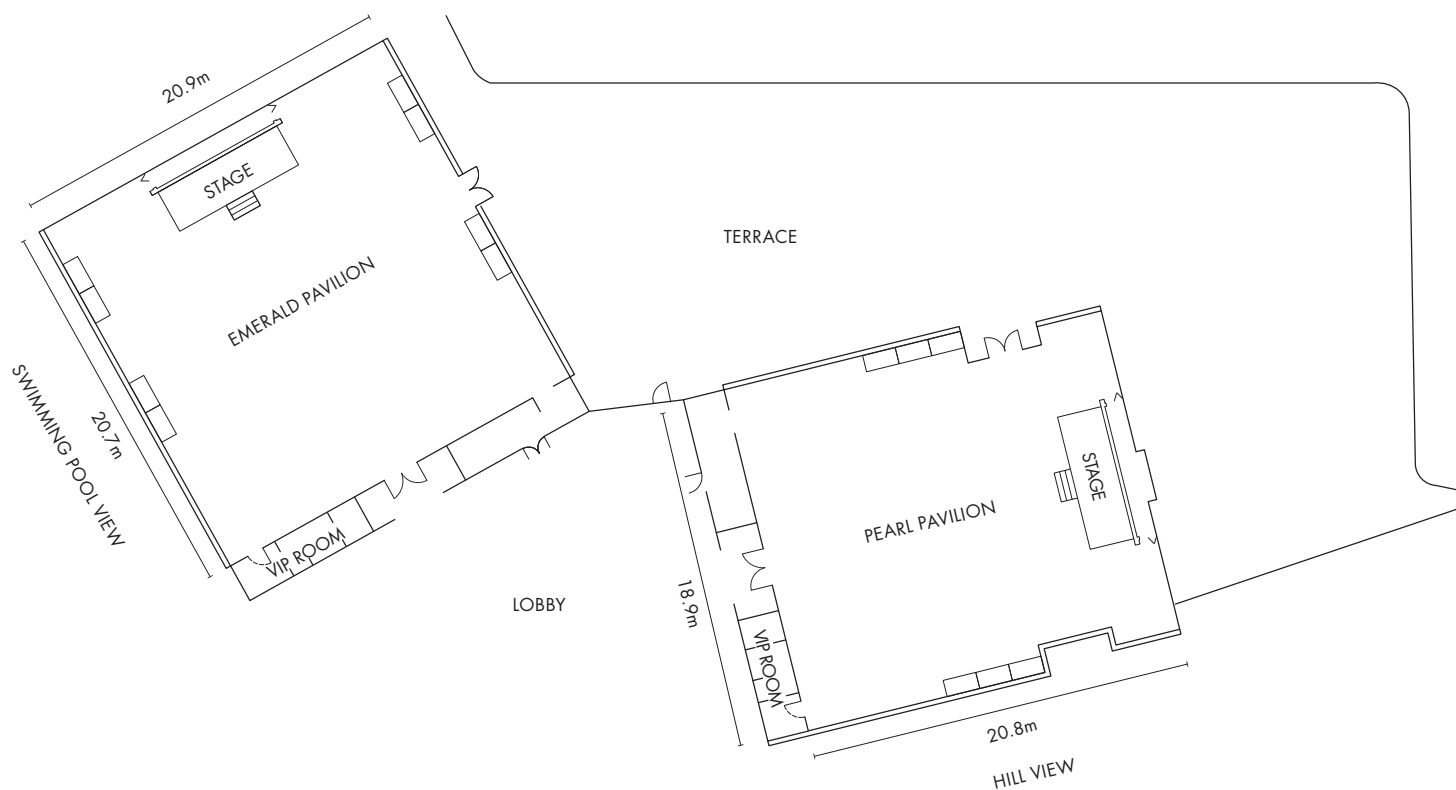


## EMERALD PAVILION & PEARL PAVILION 翡翠廳及珍珠廳 - L21

The theme design of the Emerald Pavilions "nature". The glass walls of the venue not only bring in natural light but also integrate the outdoor terrace with the interior and venue.

The enchanting view of the outdoor terrace outside the Emerald Pavilion & Pearl Pavilion complements the dazzling chandeliers seamlessly, and makes it the most delighted and unique venue for all kinds of events, including wedding ceremony and cocktail.

翡翠廳及珍珠廳的玻璃屋設計以大自然為主題，玻璃幕牆盡享天然採光，翡翠廳及珍珠廳相連的戶外花園是證婚，酒會或賓客閒敘的理想場地；場內的玻璃幕牆與室外的自然景色融合一體，戶外美景與精緻的室內吊燈互相映襯。



Venue	Ceiling Height (m)	Floor Area		Dimensions (m)	Theatre (person)	Banquet	
		(sq.m.)	(sq.ft.)			(person)	(table)
Emerald Pavilion	3.4	457	4,917	20.9 x 20.7	309	216	18
Pearl Pavilion	3.4	399	4,293	18.9 x 20.8	239	168	14
Terrace	-	917	9,871	-	-	-	-

## SUMMIT VIEW 58

### 峯景匯58 – L58

In order to match the dream of "You", Hopewell Hotel Wanchai provides "You" with different event venues, so that "You" can give full play to your personal taste and style, and feel fashionable and full of style!

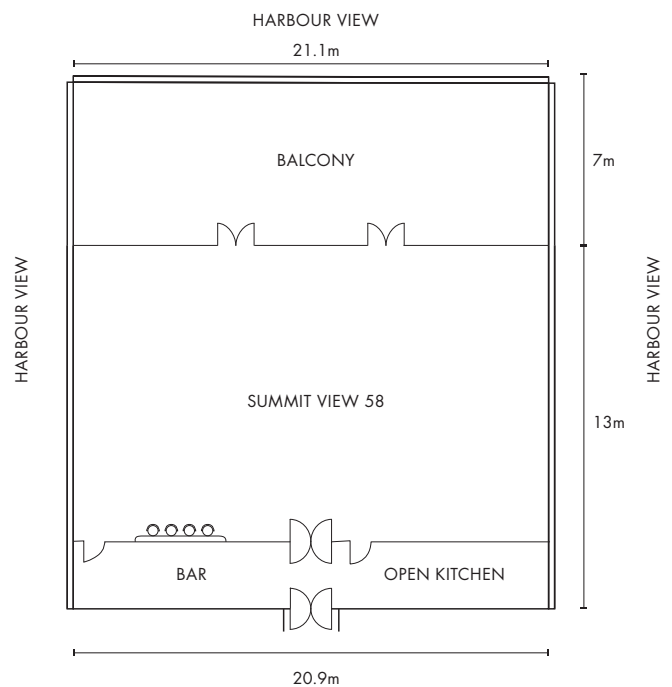
Guests or event planners can choose to hold your/clients' events at Summit View 58 on the highest floor of the hotel where you can enjoy the most breath-taking view of Victoria Harbour.

Located on the 58th floor, the design of Summit View 58 is based on British elegance and beauty, guests can overlook a completely unobstructed 180-degree view of the Victoria Harbour and the green mountain scenery. This unique venue can accommodate up to 140 persons banquet.

Regardless of day or night, Summit View 58, with its unique decoration and beautiful scenery, will definitely give you and your guests a "Wow!" and memorable moments that will be remembered in their hearts.

灣仔合和酒店致力實現「您」的夢想，提供不同特色和不同規模的活動場地，讓「您」充分發揮個人品味和風格，營造時尚且充滿氣派的活動或宴會！

賓客或活動籌辦人員可選擇位處酒店最高樓層，可飽覽維港壯麗景色的峯景匯58 舉辦動人難忘的活動及盛宴。峯景匯58 位處酒店的58樓，設計是典雅貴麗的英倫風格，可盡享完全無阻的180度維港景致以及清蔥的翠綠山景，令人心醉神迷。場地可容納約140位賓客。無論日間或夜間的峯景匯58，其獨一無二的裝璜及美景，必能讓「您」及「您」的貴賓留下銘記於心的難忘時刻。

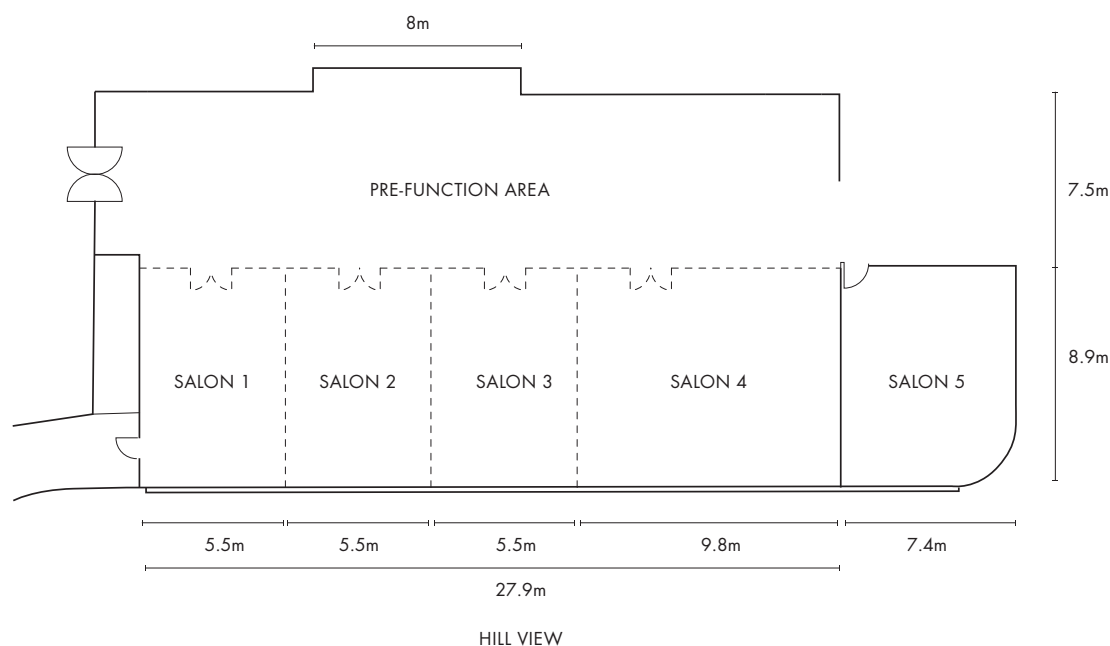


Venue	Ceiling Height (m)	Floor Area		Dimensions (m)	Theatre (person)	Banquet	
		(sq.m.)	(sq.ft.)			(person)	(table)
Summit View 58	4.5	285	3,660	20.9 x 13	140	144	12
Balcony	-	148	1,589	21.1 x 7	-	-	-

## SALONS 會議室 – L20

Salons is an exclusive area consisting of 5 small function rooms (Salon 1-5) with flexible configurations and a designated pre-function area; the event spaces are all column-free with natural daylight, providing the most flexibility and versatility to event organisers.

會議室是一個獨立的活動空間，由5間可靈活組合的小型多功能會議室(會議室 1-5)組成，附設活動前廳。無柱式及玻璃窗設計，讓室外的自然光線能帶到活動當中，進一步加強場地的空間感，為活動籌備者提供最大的靈活性及多重功能。



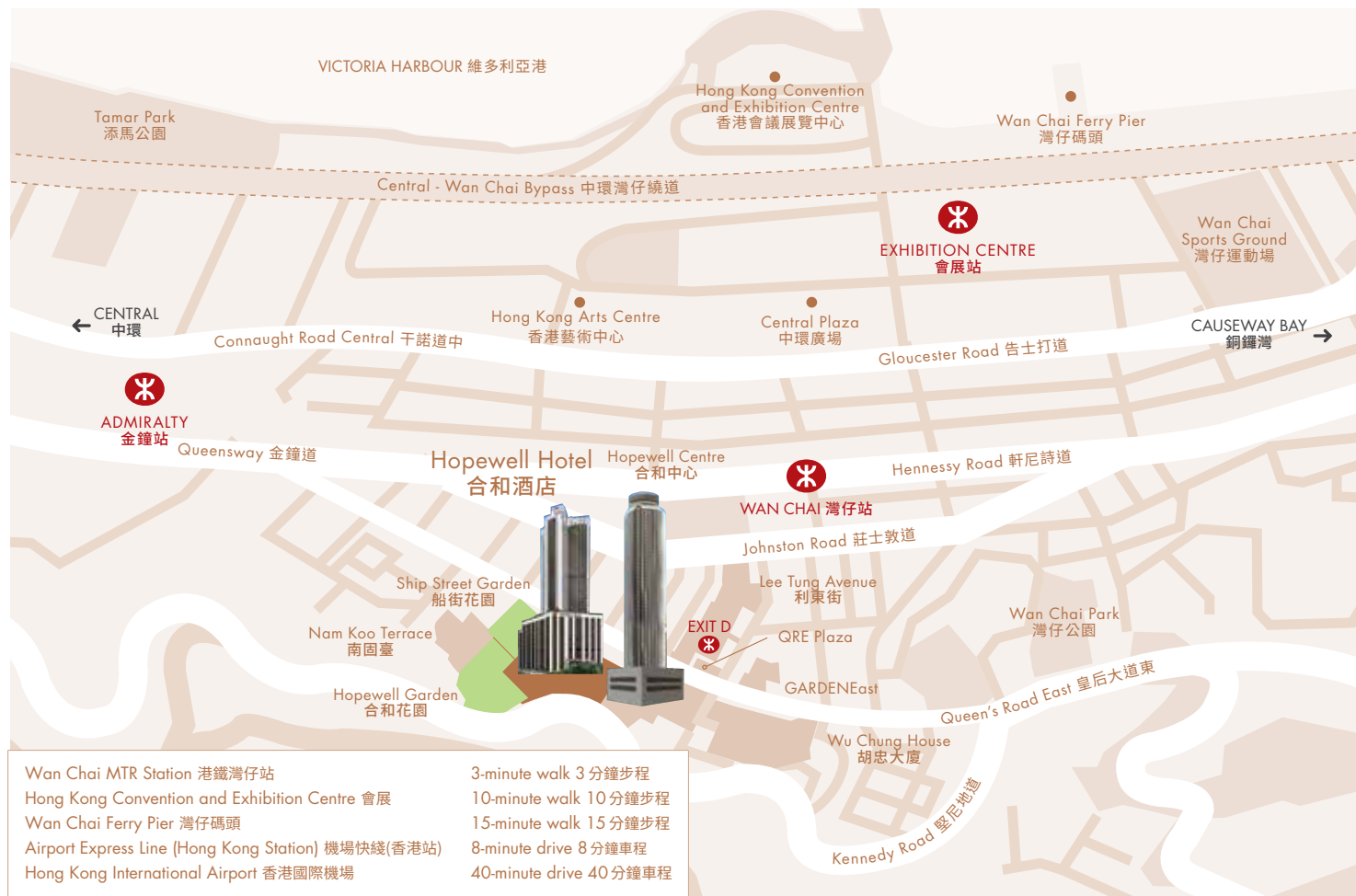
Venue	Ceiling Height (m)	Floor Area (sq.m.) (sq.ft.)		Dimensions (m)	Theatre (person)	Classroom
Salon 1	2.8	49	527	5.5 x 8.9	45	18
Salon 2	2.8	49	527	5.5 x 8.9	45	18
Salon 3	2.8	49	527	5.5 x 8.9	45	18
Salon 4	2.8	87	936	9.8 x 8.9	75	36
Salon 5	2.8	61	657	7.4 x 8.9	52	26
Salons 1-4 (Combined)	2.8	234	2,517	-	210	106
Pre-function Area	2.8	207	2,227	-	-	-

# CAPACITY CHART

Level	Venue	Ceiling Height (m)	Floor Area (sq.m.) (sq.ft.)		Dimensions (m)	Theatre (person)	Banquet (person)	Banquet (table)
16	Grand Ballroom (I + II + Prefunction Area II)	8	2,678	28,815	56 x 49.6	1,800	1,584	132
	Pre-function Area I	4.6	484	5,358	24.8 x 20.1	-	-	-
	Pre-function Area II	8	294	3,450	22.5 x 13.4	-	-	-
	Grand Ballroom I	8	778	8,708	36.4 x 22.5	500	408	34
	Grand Ballroom II	8	1,606	17,951	49.8 x 33.5	1,300	852	71
	VIP Lounge	3.8	138	1,485	20.6 x 6.7	-	-	-
19	Crystal Court	6.4	1,003	10,792	39.2 x 22.7	750	696	58
	Crystal Court I	6.4	341	3,669	16.8 x 20.3	300	240	20
	Crystal Court II	6.4	575	6,187	22.4 x 22.7	450	408	34
	Pre-function Area	3.7	547	5,886	26 x 15.5	-	-	-
20	Salon 1	2.8	49	527	5.5 x 8.9	45	-	-
	Salon 2	2.8	49	527	5.5 x 8.9	45	-	-
	Salon 3	2.8	49	527	5.5 x 8.9	45	-	-
	Salon 4	2.8	87	936	9.8 x 8.9	75	-	-
	Salon 5	2.8	61	657	7.4 x 8.9	52	-	-
	Salons 1-4 (Combined)	2.8	234	2,517	-	210	-	-
	Pre-function Area	2.8	207	2,227	-	-	-	-
21	Emerald Pavilion	3.4	457	4,917	20.9 x 20.7	309	216	18
	Pearl Pavilion	3.4	399	4,293	18.9 x 20.8	239	168	14
	Terrace	-	917	9,871	-	-	-	-
58	Summit View 58	4.5	285	3,660	20.9 x 13	140	144	12
	Balcony	-	148	1,589	21.1 x 7	-	-	-

All information and renderings are provided for reference only, and subject to change. 所有資料及效果圖只供參考, 可能有所變動。

## LOCATION



HOPEWELL HOTEL

15 KENNEDY ROAD, WAN CHAI, HONG KONG

+852 2620 3688 ENQUIRY@HOPEWELLHOTEL.COM HOPEWELLHOTEL.COM